

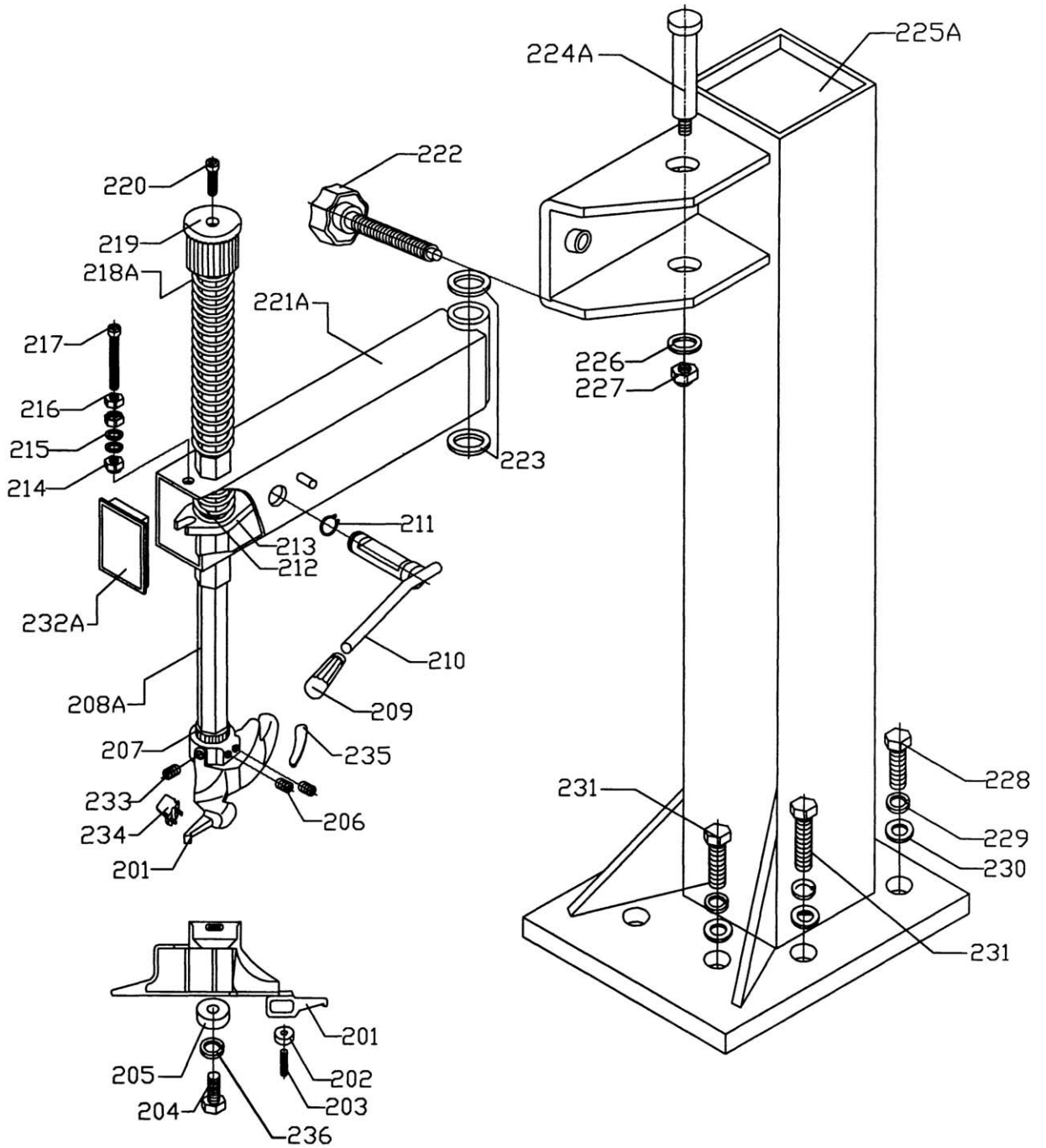




# 1850 SPARE PART-VERTICAL ARM

QJ/GM. 1850. 00F-2006-A EDITION

Part 2 of 6

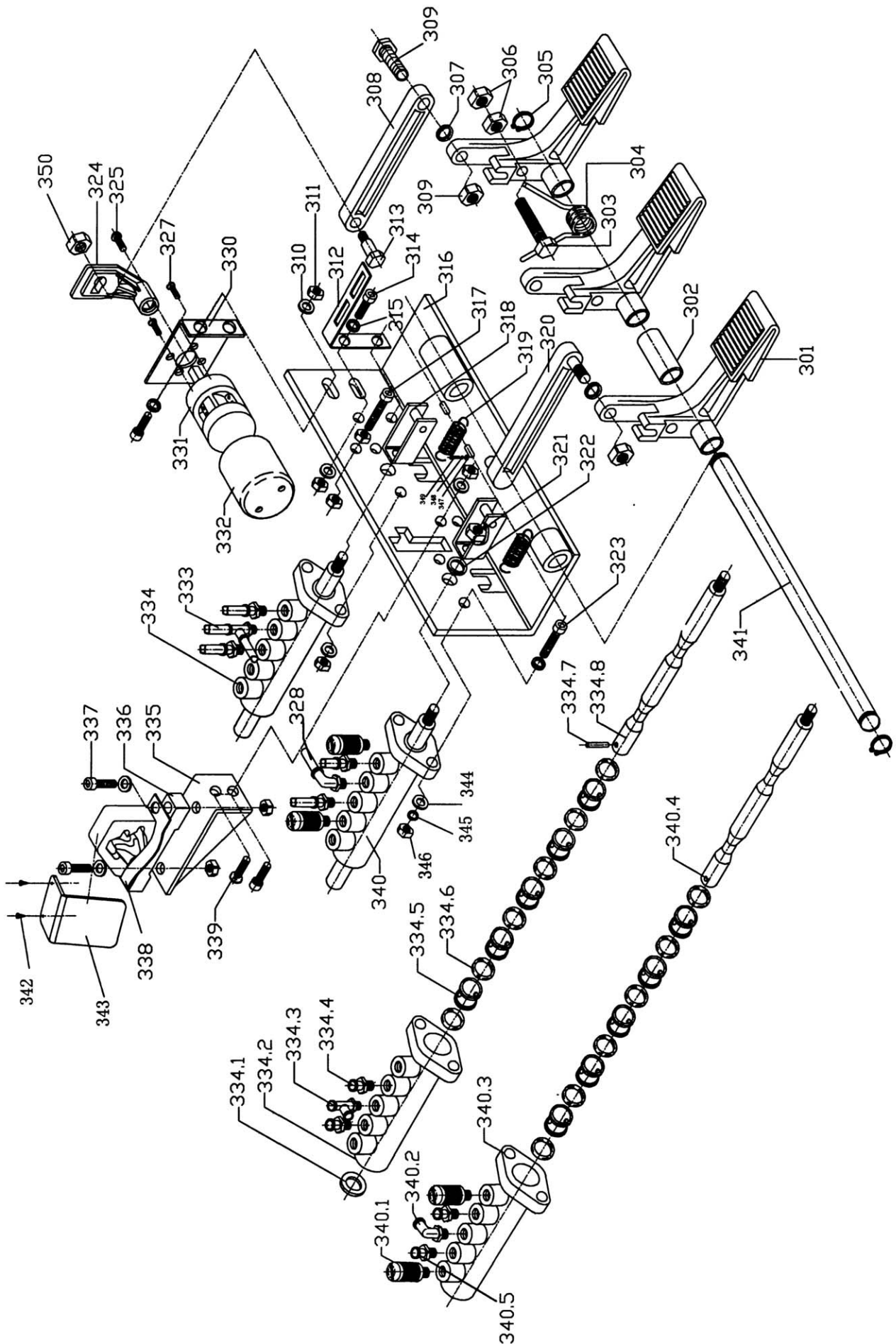




# 1850-SPARE PART-PEDAL UNIT

T-D. 02. 00 QJ/GM. 1850. 00F-2006-A EDITION

Part 3 of 6



# 1850-SPARE PART-PEDAL UNIT

T-D. 02. 00

QJ/GM. 1850. OOF-2006-A ED ITI ON

Part 3 of 6

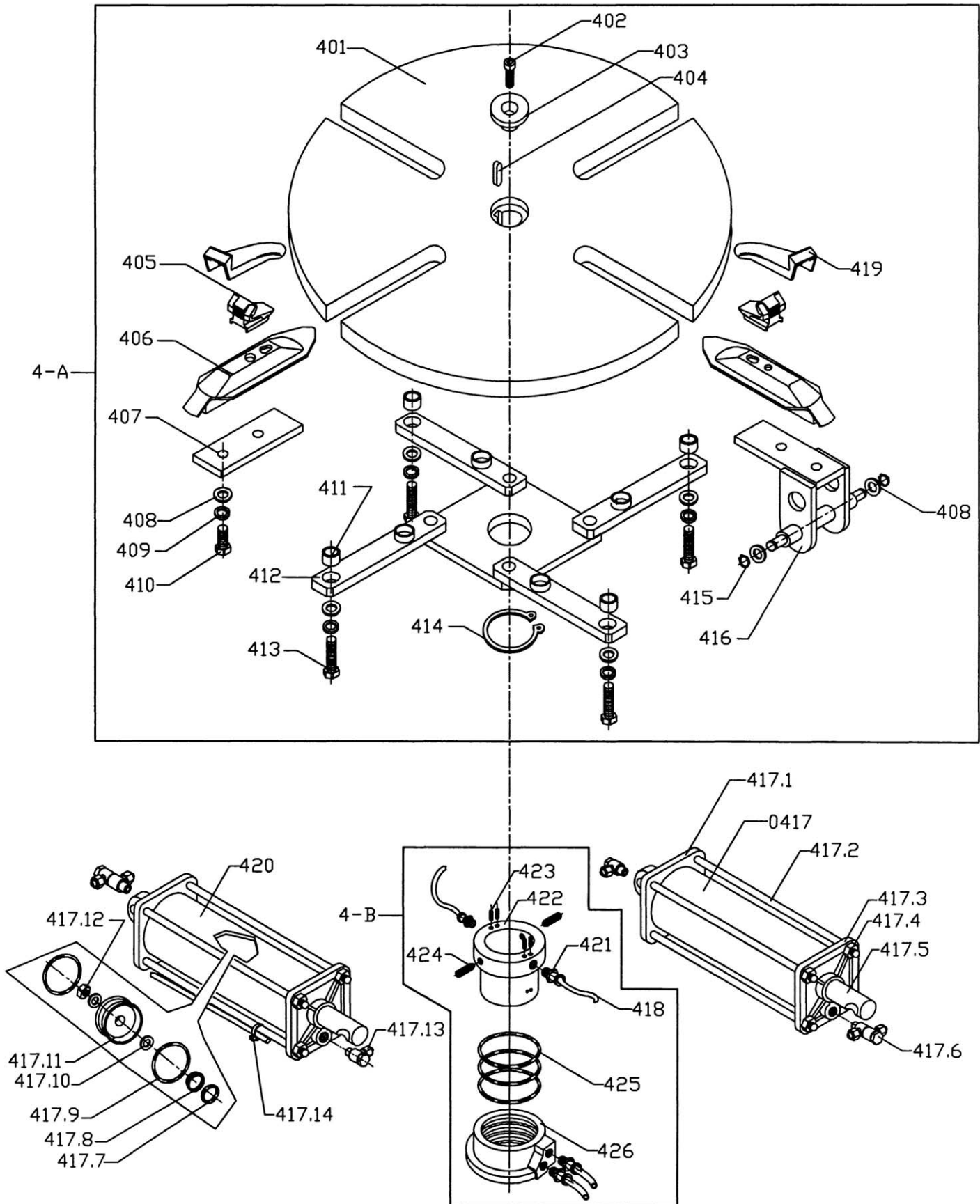
Ref	Code	Description	Specification	Q'ty	Note
301	T-D. 02. 12 (B/C)	Pedal		3	
302	T-D. 02. 01	Spacer pedal		1	
303		Screw	M8X55	1	Half buckle
304	T-D. 02. 02	Spring		1	
305		Seeger ring	14#	2	
306		Nut	M8	2	
307	T-D. 02. 10	Spacer		2	
308	T-D. 02. 22A	Switch connecting rod		1	
309		Locknut	M8	3	
310		Flat washer	6	8	
311		Nut	M6	10	
312	T-D. 02. 21A	Spring bracket		1	
313	T-D. 02. 26A	Spindle		1	
314		Screw	M6X16	5	
315		Elastic washer	6	8	
316	T-D. 02. 03. 00	Pedal bracket		1	
317		Screw	M6X30	1	
318	T-D. 02. 15	Bracket		2	
319	T-D. 02. 04	Spring		2	
320	T-D. 01. 09	Connecting rod		1	
321		Locknut	M8	2	
322	T-D. 02. 10	Spacer		1	
323		Screw	M5X25	4	
324	T-D. 02. 23A	Reverse lever	□8	1	
325		Pin	4X12	1	
326					
327		Pin	M5X16	4	
328					
329					
330	T-D. 02. 17	Switch bracket		1	
331		Reverse switch	40A	1	
332		Reverse switch cover		1	
333		PU hose	Ø8X5	some	
334		Valve assemble		1	
334.1		Flat washer	10	1	
334.2	T-D. 02. 14	Valve body		1	
334.3		Union	GI/8"- Ø8	1	
334.4		Union	GI/8"- Ø8	2	
334.5	T-U. 01. 16	Spacer		10	
334.6		(bring	Ø 17X4	12	
334.7		Spring pin	Ø 4X20	1	
334.8	T-D. 02. 13A	Shaft for cylinder		1	
335	T-D. 02. 05	Cam bracket		1	
336	T-D. 01. 00	Cam		1	
337		Screw	M6X25	2	
338		Fork plate spring		1	
339		Screw	M6X16	1	
340		Valve assemble		1	
340.1		Silencer	GI/8"	4	
340.2		Union	GI/8"- Ø8	1	
340.3	T-D. 02. 14	Valve body		1	
340.4	T-D. 02. 07	Valve pin		1	
340.5		Union	GI/8"- Ø6	2	
341	T-D. 02. 20	bpmdie		1	
342		Pin	M3X10	2	
343		i/aw plate		1	
344		Flat washer	Ø 5	8	
345		Elastic washer	Ø 5	4	
346		Nut	M5	4	
347		Mat wasner	Ø 10	2	
348		Elastic washer	Ø 10	2	
349		Screw	M10X25	2	
350		Locknut	M6	1	
351		Union	GI/8"- Ø6	2	
352		Screw	M8X40	1	
353					

# 1850-SPARE PART-TURNTABLE

T-18Y.00.00

QJ/GM. 1850. 00F-2006-A EDITION

Part 4 of 6







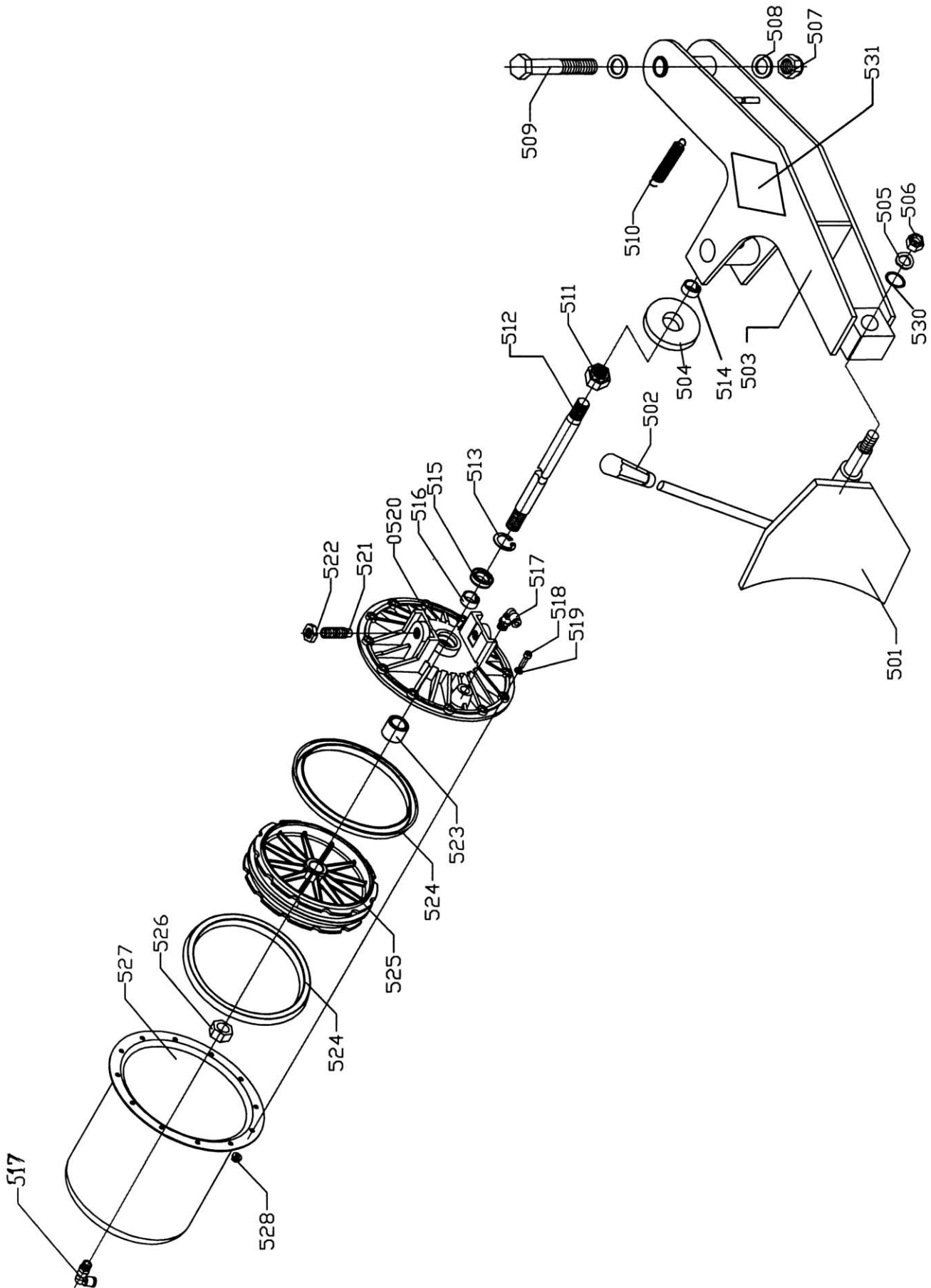
# 1850-SPARE PART-BEAD BREAKER AND IT'S CYLINDER

T-B.03.00

T-LS.02.00A

QJ/GM.1850.00F-2006-A EDITION

Part 5 of 6



# 1850-SPARE PART-BEAD BREAKER AND IT'S CYLINDER

T-B.03.00, T-LS.02.00A

QJ/GM.1850.OOF-2006-A EDITI ON

## Part 5 of 6

Ref	Code	Description	Specification	Q'ty	Note
501	T-C. 02. 00	Bead breaker shoe		1	
502	GT890. 03. 14	Handle cover		1	
503	T-B. 03. 00	Bead breaker		1	
504		Bead breaker washer	Ø80X20X10	1	
505		Washer	14	1	
506		Locknut	M14	1	
507		Locknut	M16	1	
508		Flat washer	16	2	
509		Screw	M16X100	1	
510	T-B.02.07	Spring	Ø13(inside)	1	
511		Locknut	M18X1. 5	1	
512	T-LS. 02. 01A	Cylinder shaft	385mm	1	
513		beeger ring	30 #	1	
514	T-LS. 01. 05A	Adjusting wasner		1	
515		Y-ring	Ø30XØ20X5	1	
516		Guide for piston rod	50 (length) X10X2.1	1	
517		Union	G1/8"- Ø8	2	
518		Screw	M6X20	12	
519		Mat washer	6	12	
520	T-LS. 01. 04A	Cylinder housing		1	
521		Screw	M14X42	2	special machine
522		Nut	M14-S19	2	
523	T-LS. 01. 06A	spacer		1	
524		Bowl	Ø186X12X9	2	
525	T-LS. 01. 02A	Piston		1	
526		Nut	M18X1. 5	1	
527	T-LS. 01. 03A	Cylinder body		1	
528		Nut	M6	12	
529					
530		Nonstandard washer	37X13X2.5	1	
531		sticker		1	
532		O-ring	Ø185X5.7		
533		Union	G1/4"- Ø8	1	
534					
535					
536					
537					
538					
539					
540					
541					
542					
543					
544					
545					
546					
547					
548					
549					
550					
551					
552					
553					
554					
555					
556					
557					
558					
559					

# 1850-SPARE PART

T-J.00.00

QJ/GM. 1850. 00F-2006-A EDITION

Page 6 of 6

